



**CERÂMICA CRUZEIRO**

# Catálogo

*Estrutural*

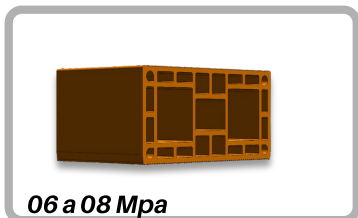




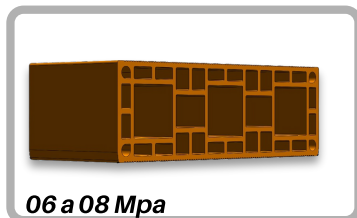
## Produtos

### Linha Estrutural Família 14

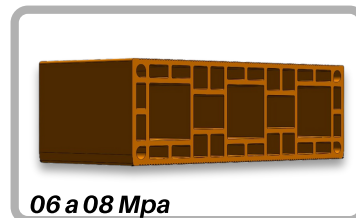
14x19x29



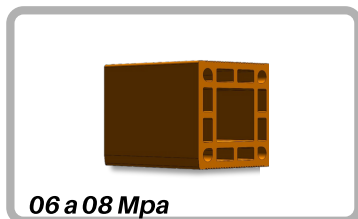
14x19x39



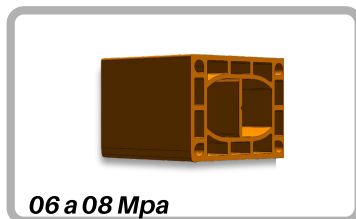
14x19x44



14x19x14



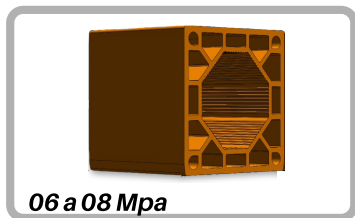
14x19x19



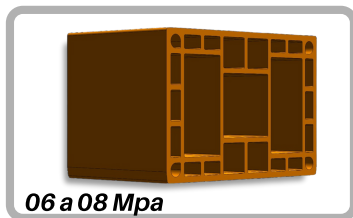
## Produtos

### Linha Estrutural Família 19

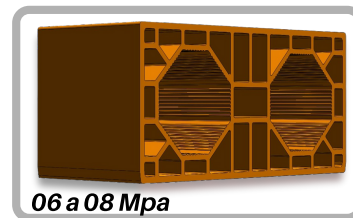
19x19x19



19x19x29



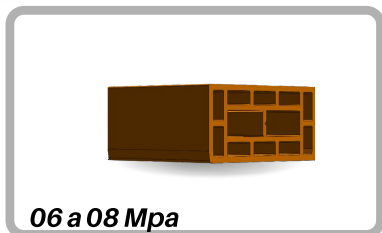
19x19x39



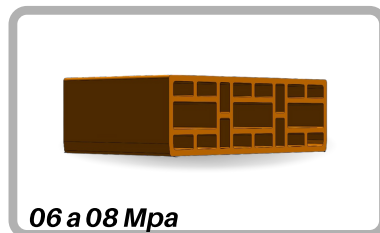
## Produtos

### Linha Estrutural Família 9 e 11,5

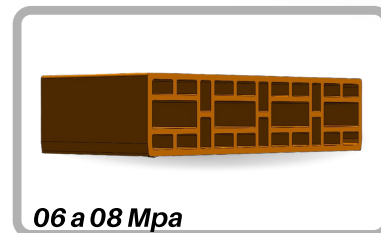
09x19x19



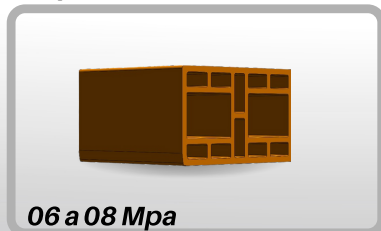
09x19x29



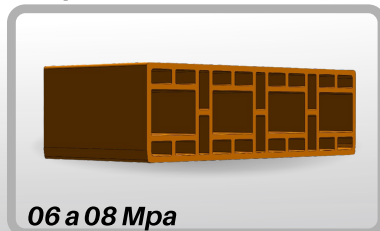
09x19x39



11,5x19x19



11,5x19x39



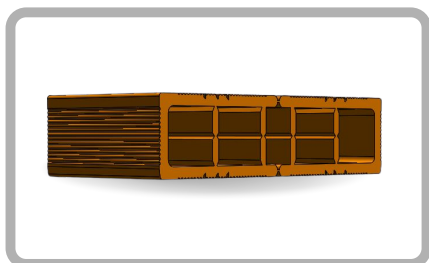
# Todos os produtos atendem os requisitos do PBQPH

\*Programa Brasileiro da Qualidade e Produtividade do Habitat



## Canaletas

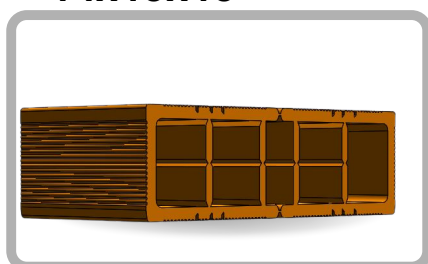
09x19x19



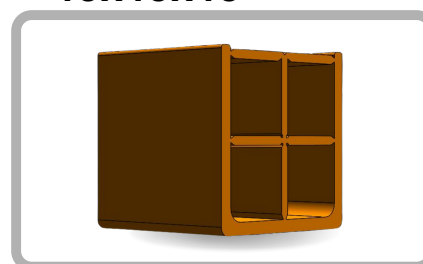
11,5x19x19



14x19x19

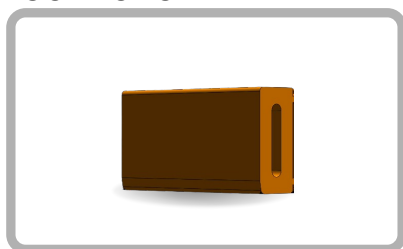


19x19x19

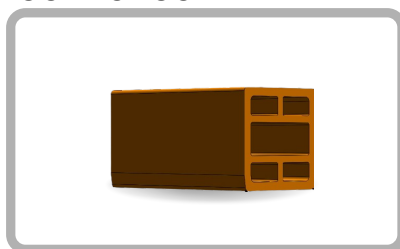


## Blocos Seccionados

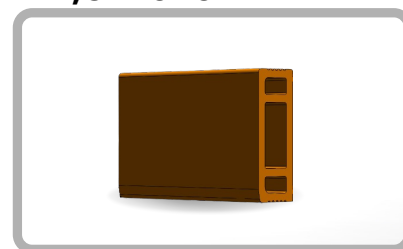
09x19x04



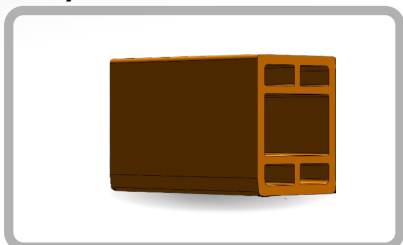
09x19x09



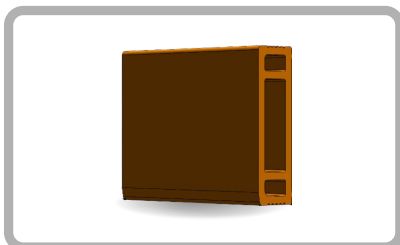
11,5x19x04



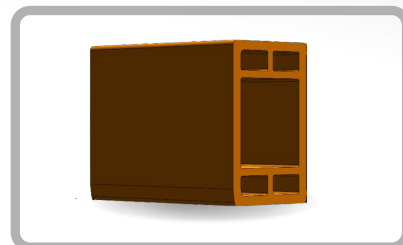
11,5x19x09



14x19x04



14x19x09



19x19x04



19x19x09





Espaço do Representante:



 (34)98861-0996

 [ceramicacruzairo.com.br](http://ceramicacruzairo.com.br)

 Endereço: R. das Palmeiras, 420 - São Sebastião, Araguari - MG, CEP - 38443-112

